

CHOCTAW ELECTRIC CO-OP  
Darrell Ward  
(580) 314-5166  
dward@choctawelectric.coop

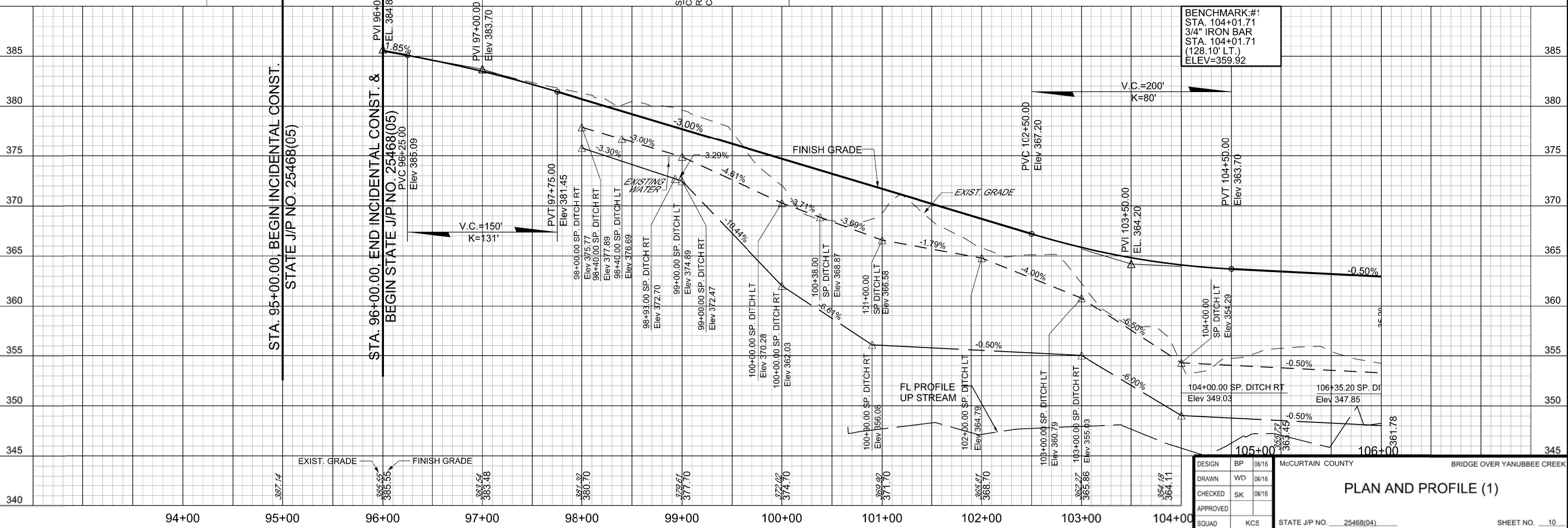
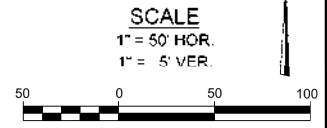
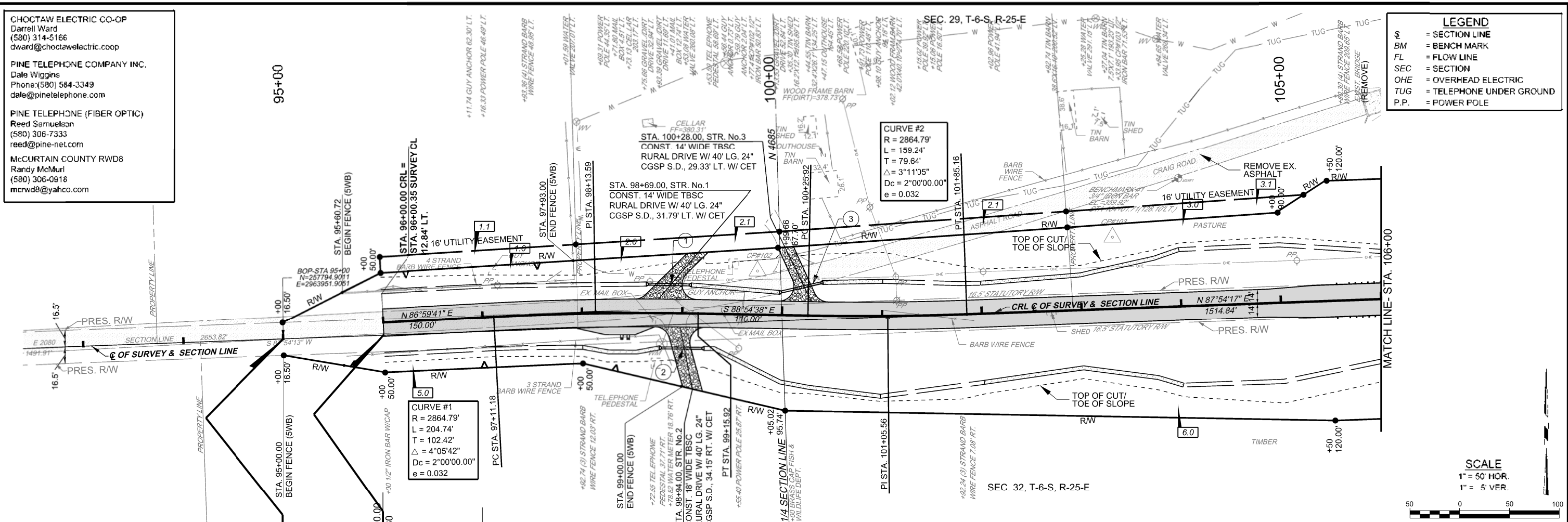
PINE TELEPHONE COMPANY INC.  
Dale Wiggins  
Phone: (580) 584-3349  
dale@pinetelephone.com

PINE TELEPHONE (FIBER OPTIC)  
Reed Samuelson  
(580) 306-7333  
reed@pine-net.com

McCURTAIN COUNTY RWD8  
Randy McMurl  
(580) 306-0918  
mcrwd8@yahoo.com

**LEGEND**

- § = SECTION LINE
- BM = BENCH MARK
- FL = FLOW LINE
- SEC = SECTION
- OHE = OVERHEAD ELECTRIC
- TUG = TELEPHONE UNDER GROUND
- P.P. = POWER POLE



BENCHMARK:#1  
STA. 104+01.71  
3/4" IRON BAR  
STA. 104+01.71  
(128.10' LT.)  
ELEV=359.92

DESIGN	BP	06/16
DRAWN	WD	06/16
CHECKED	SK	06/16
APPROVED		
SQUAD	KCS	

McCURTAIN COUNTY  
BRIDGE OVER YANUBBEE CREEK

**PLAN AND PROFILE (1)**

STATE J/P NO. 25468(04)

SHEET NO. 10

12/16/2016 N:\AD06 YANUBBEE CREEK\Drawings\AD06-11-P&P 01.dgn